

BRUNSWICK

BROKERS

COMMERCIAL REAL ESTATE

Brick & Beam Office Space with Modern Vibe

FOR LEASE CENTERBEAM PLACE 14 KING STREET

Saint John | NB

Stephanie Turner



14 King Street | Saint John, NB
Stephanie Turner



Property Highlights

BASE RENT
\$14.00 psf

A much sought-after location for any company seeking an unparalleled work environment of beauty and efficiency. CenterBeam Place comprises a city block of heritage buildings built between 1878-1880, situated at the edge of Saint John Harbour.

These 'brick & beam style' office suites are demisable, offer plenty of large windows and natural light, as well as private elevator access.



**UPTOWN
LOCATION**



**BOMA BEST
CERTIFIED SILVER**



**PARKING
NEARBY**



**ELEVATOR
ACCESS**



**TRANSIT
ACCESSIBLE**

BRUNSWICK
BROKERS

12 Smythe St, Suite 104
Saint John, NB
E2L 5G5

Stephanie Turner
(506) 333-3442
sturner@bbrokers.ca
www.bbrokers.ca



14 King Street | Saint John, NB
Stephanie Turner



Property Details

AVAILABLE
IMMEDIATELY

NUMBER OF FLOORS	Four
BUILDING SIZE	123,734 sf
SIZES AVAILABLE	Suite 220-240: 7,636 sf RAW SPACE Fit-up Ready Suite 300: 9,797 sf Suite 330: 8,381 sf Suite 430: 5,612 sf
MAX CONTIGUOUS SPACE	9,797 sf
MIN DIVISIBLE SPACE	5,612 sf
PARKING	Public and private lots nearby
BOMA BEST LEVEL	Boma Best Certified Silver
TENANT IMPROVEMENT ALLOWANCE	To be negotiated based on tenant, terms & conditions

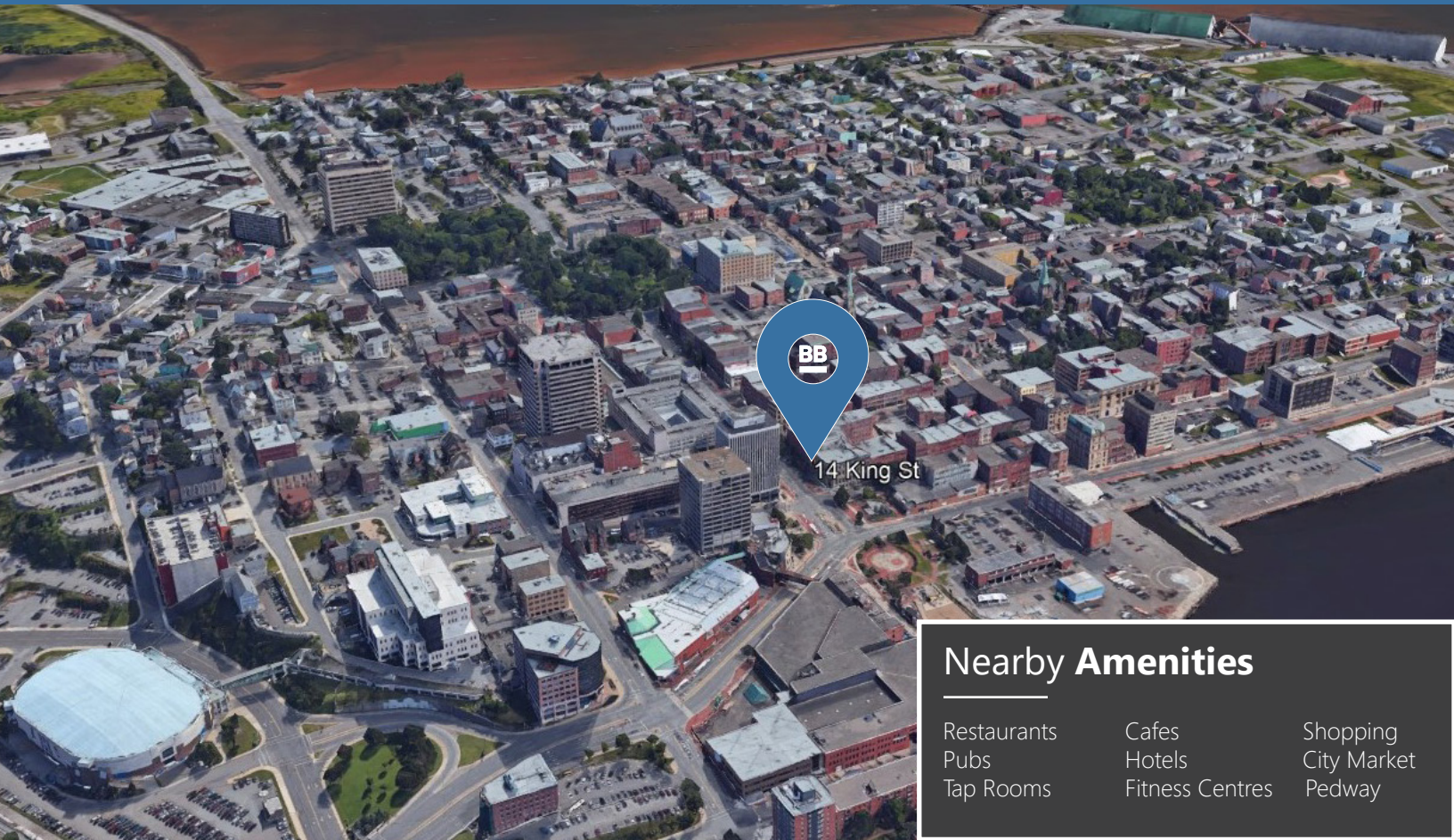
BRUNSWICK
BROKERS

12 Smythe St, Suite 104
Saint John, NB
E2L 5G5

Stephanie Turner
(506) 333-3442
sturner@bbrokers.ca
www.bbrokers.ca



14 King Street | Saint John, NB
Stephanie Turner



Nearby Amenities

- Restaurants
- Pubs
- Tap Rooms
- Cafes
- Hotels
- Fitness Centres
- Shopping
- City Market
- Pedway

Saint John

2023 POPULATION	138,985
POPULATION INCREASE (2019 - 2023)	5.81%
MEDIAN AGE	44.4
AVERAGE HOUSEHOLD INCOME	\$63,737

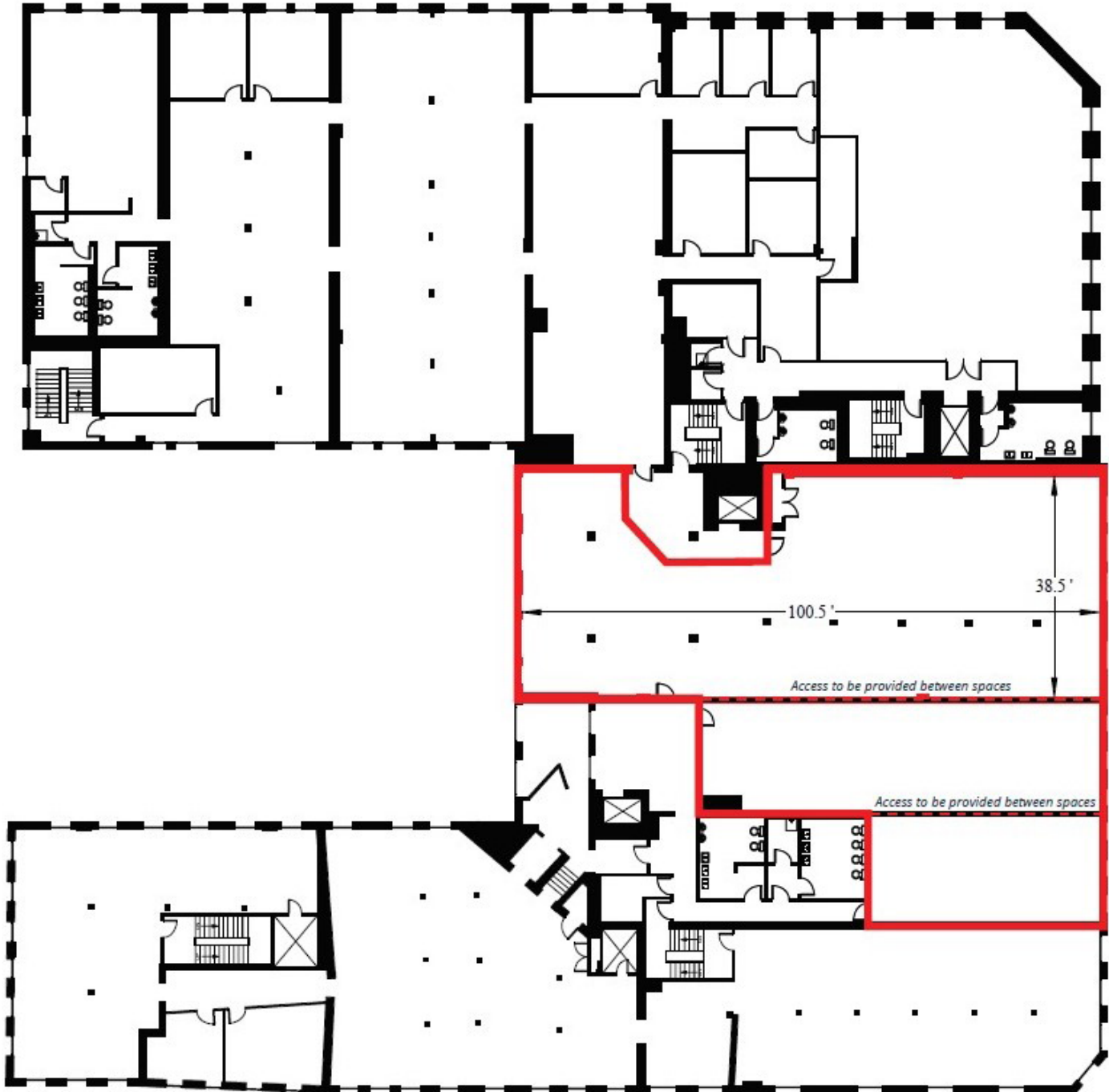


Property Photos

14 King Street | Saint John, NB
Stephanie Turner



SUITE 220-240
7,636 sf

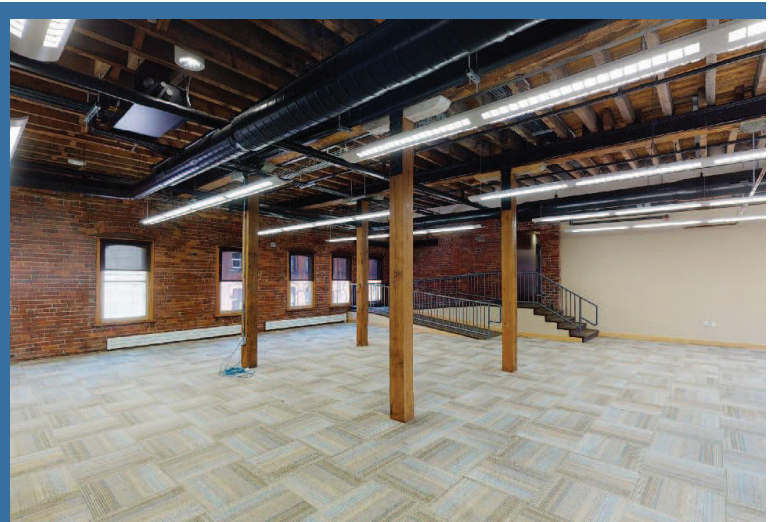
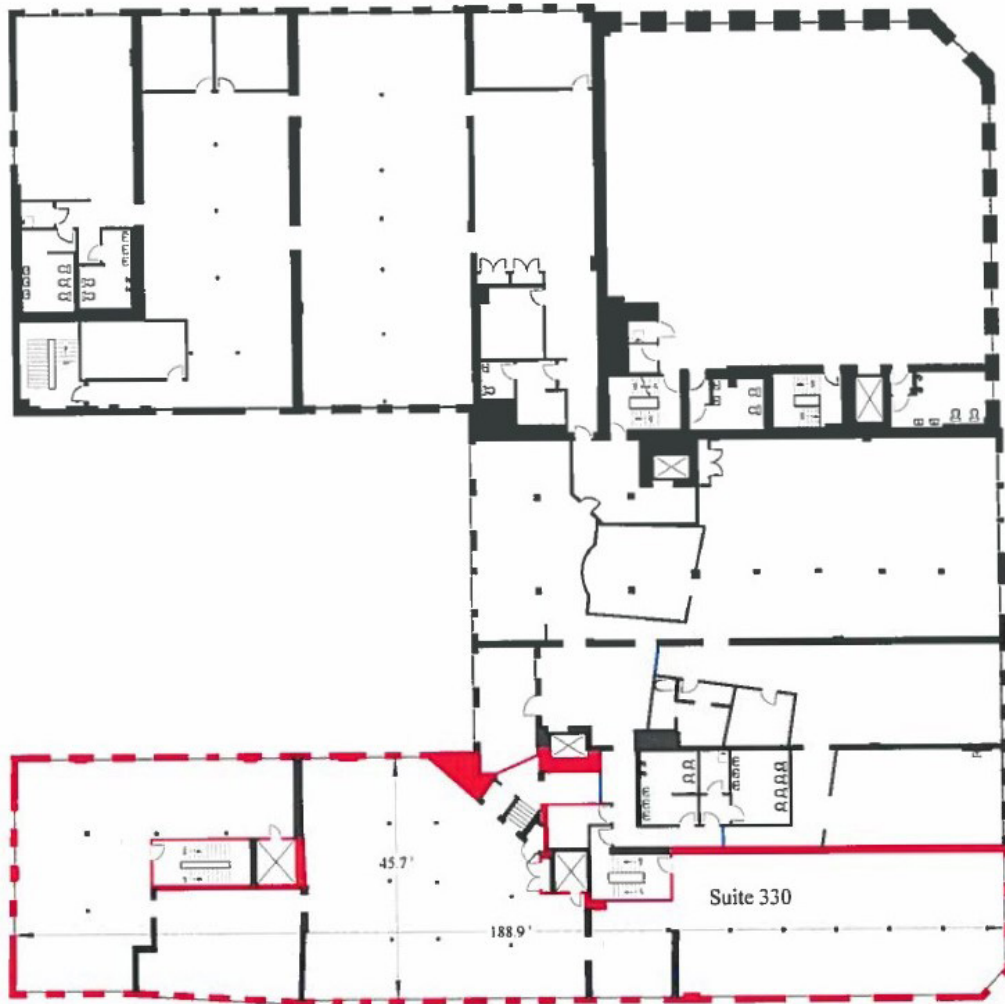


14 King Street | Saint John, NB
Stephanie Turner

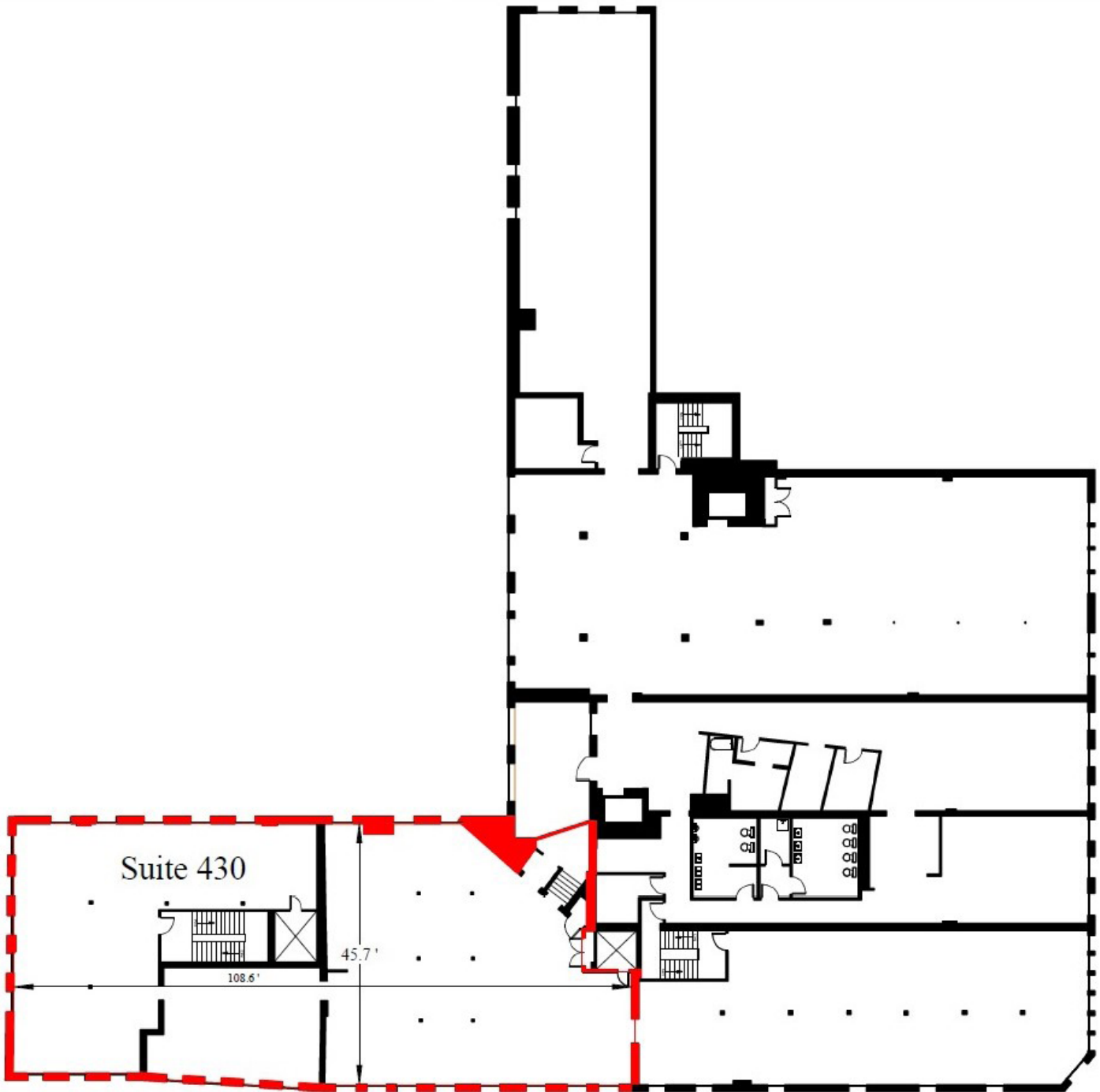
SUITE 300
9,797 sf



SUITE 330
8,381 sf



SUITE 430
5,612 sf





14 King Street | Saint John, NB

Stephanie Turner
(506) 333-3442
sturner@bbrokers.ca

12 Smythe Street, Suite 104
Saint John, NB
E2L 5G5

bbrokers.ca

BRUNSWICK
BROKERS

Brunswick Brokers Limited (Brunswick Brokers) and its agents and affiliates do not warrant, represent or guarantee the accuracy, completeness, validity or non-infringement of the information provided herein. Parties interested in a property should conduct their own independent investigations to determine the suitability of the property for their intended use and are strongly urged to discuss the property with their professional advisors. Brunswick Brokers assumes no liability or responsibility for any errors or omissions occurring in the information provided herein and shall not be liable for any direct, incidental, consequential, indirect or punitive damages arising out of the use of such information.