



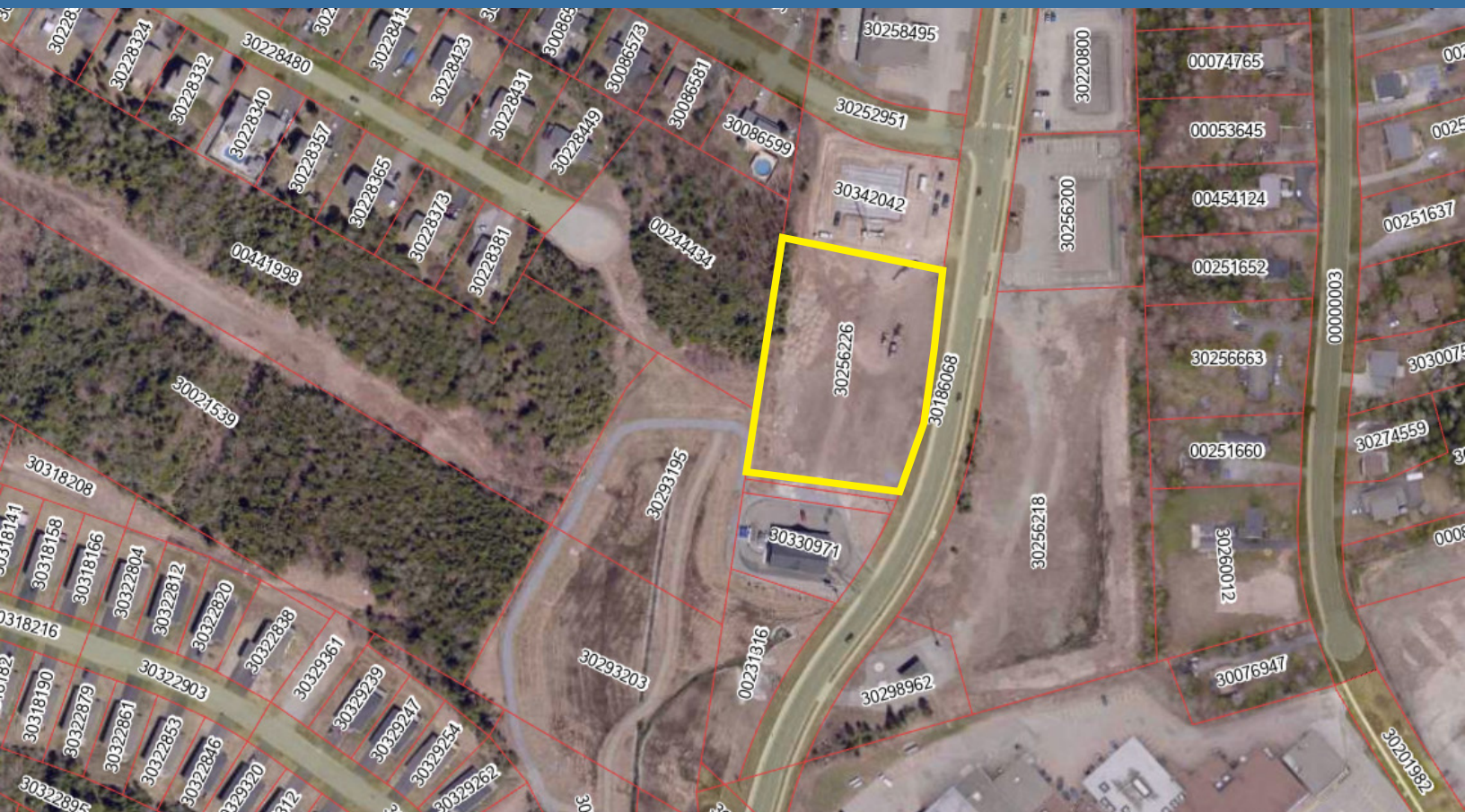
**BRUNSWICK**  
BROKERS  
COMMERCIAL REAL ESTATE

# Professional Centre Build to Suit Opportunity

**15 Pettingill Road**

Quispamsis | NB

**Troy Nesbitt**



## Property Highlights

Incredible opportunity for professionals looking for space to lease in the ever growing Kennebecasis Valley. Join a group of high end, existing professional tenants such as Papadop Smiles Orthodontics, Rehab 1 Physiotherapy, Kennebecasis Valley Oral Surgery, and Glo Skin.

Owners/Developers are tenants in the current building and have the ability to add an additional 8,000 sf. Sleek modern design, high visibility, and convenient location for both clients and professionals.



**GREAT  
LOCATION**



**PROFESSIONAL  
BUILDING**

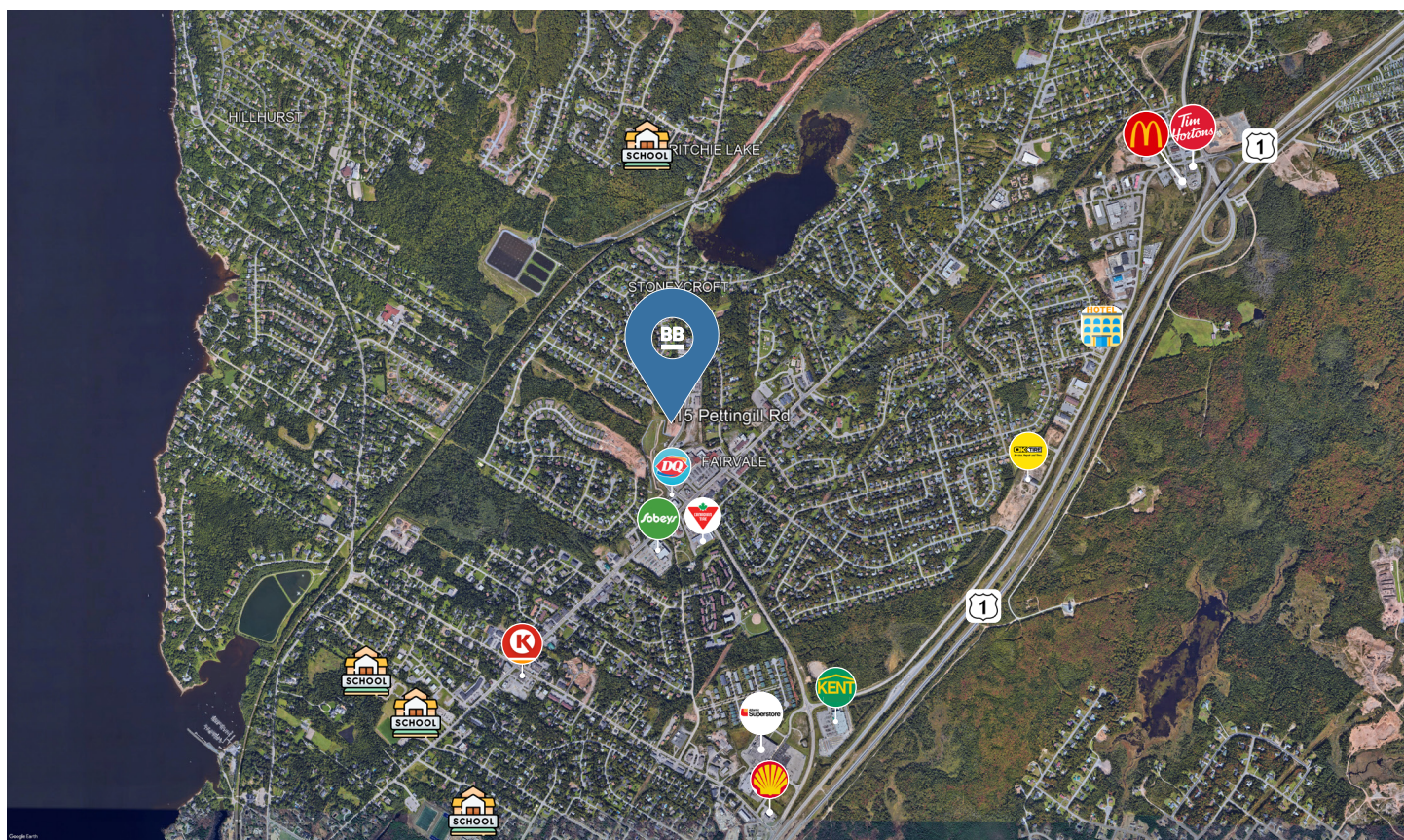


**PARKING  
ON-SITE**

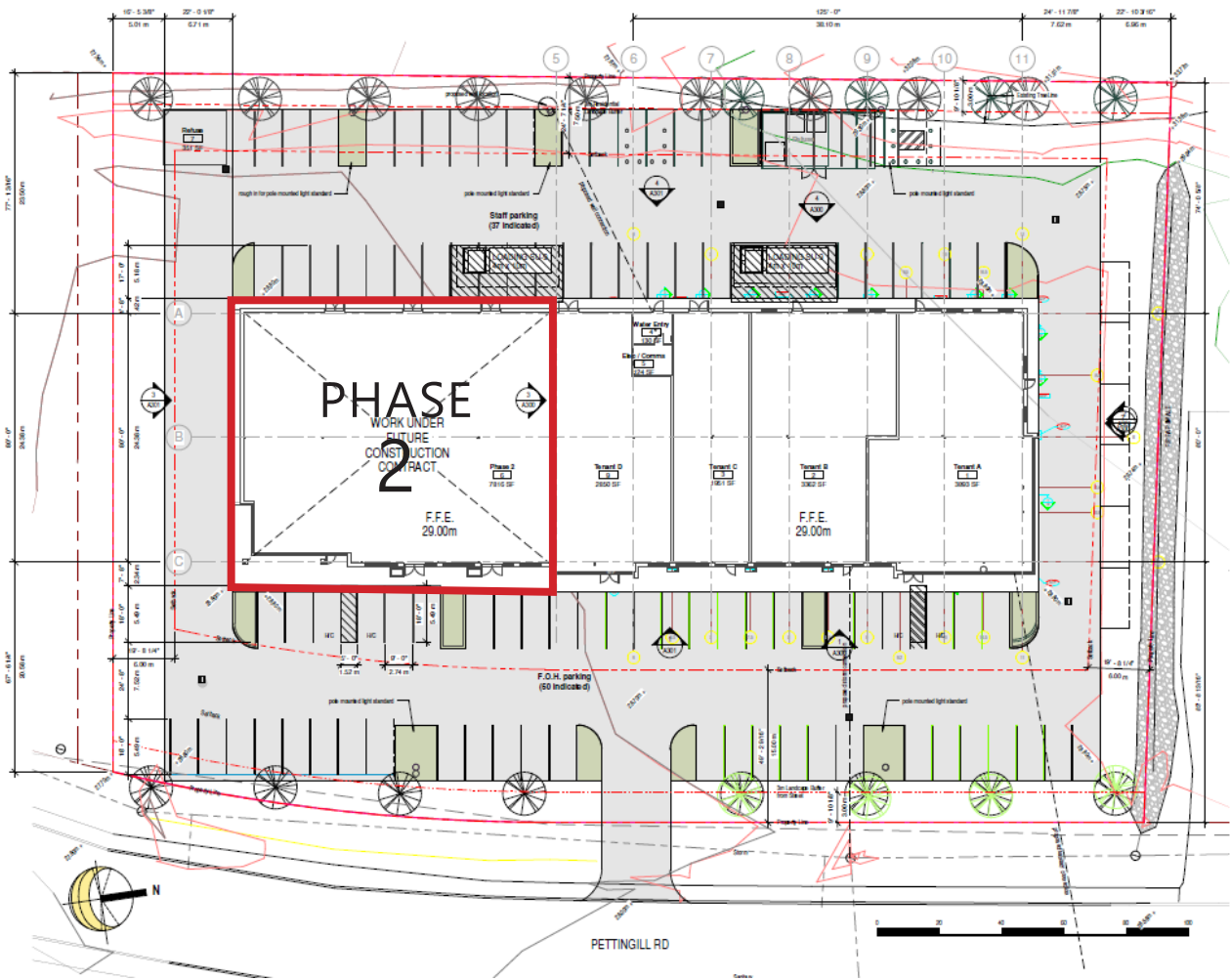


## Property Details

<b>CURRENT CONFIGURATION</b>	Currently approximately 8,000 sf. Build to suit option for another 8,000 sf
<b>PARKING</b>	Parking in front of building for clients, parking for staff at rear of building
<b>STATUS</b>	Pre-Leasing
<b>AVAILABILITY</b>	TBD



# Site Plan





PH.2 | PH.1

15 Pettingill Road | Quispamsis, NB

**Troy Nesbitt**  
(506) 349-5670  
tnesbitt@bbrokers.ca

12 Smythe Street, Suite 104  
Saint John, NB  
E2L 5G5

**bbrokers.ca**

**BRUNSWICK**  
BROKERS  
COMMERCIAL REAL ESTATE

*Brunswick Brokers Limited (Brunswick Brokers) and its agents and affiliates do not warrant, represent or guarantee the accuracy, completeness, validity or non-infringement of the information provided herein. Parties interested in a property should conduct their own independent investigations to determine the suitability of the property for their intended use and are strongly urged to discuss the property with their professional advisors. Brunswick Brokers assumes no liability or responsibility for any errors or omissions occurring in the information provided herein and shall not be liable for any direct, incidental, consequential, indirect or punitive damages arising out of the use of such information.*